



TELECOMMUNICATIONS MONOPOLES



CONTACT US

T. +44 (0) 1920 860600
E. hello@cuphosco.com
W. cuphosco.com

CU Phosco



LEADING THE WAY IN MONOPOLE SOLUTIONS FOR URBAN AND SEMI-URBAN ENVIRONMENTS

CU Phosco is a market leader in the design, manufacture, installation and maintenance of steel structures that support multiple sectors globally. From High Masts for airports and ports, to antenna solutions for Mobile Network Providers, our family-owned business has been at the forefront of this developing industry,

Working with the world's leading Mobile Network Operators for over 60 years, CU Phosco has been at the heart of the telecommunications industry from the early days. Our team have developed robust, functional monopoles and antenna mast packages to support densification and connectivity for urban and semi-urban environments.

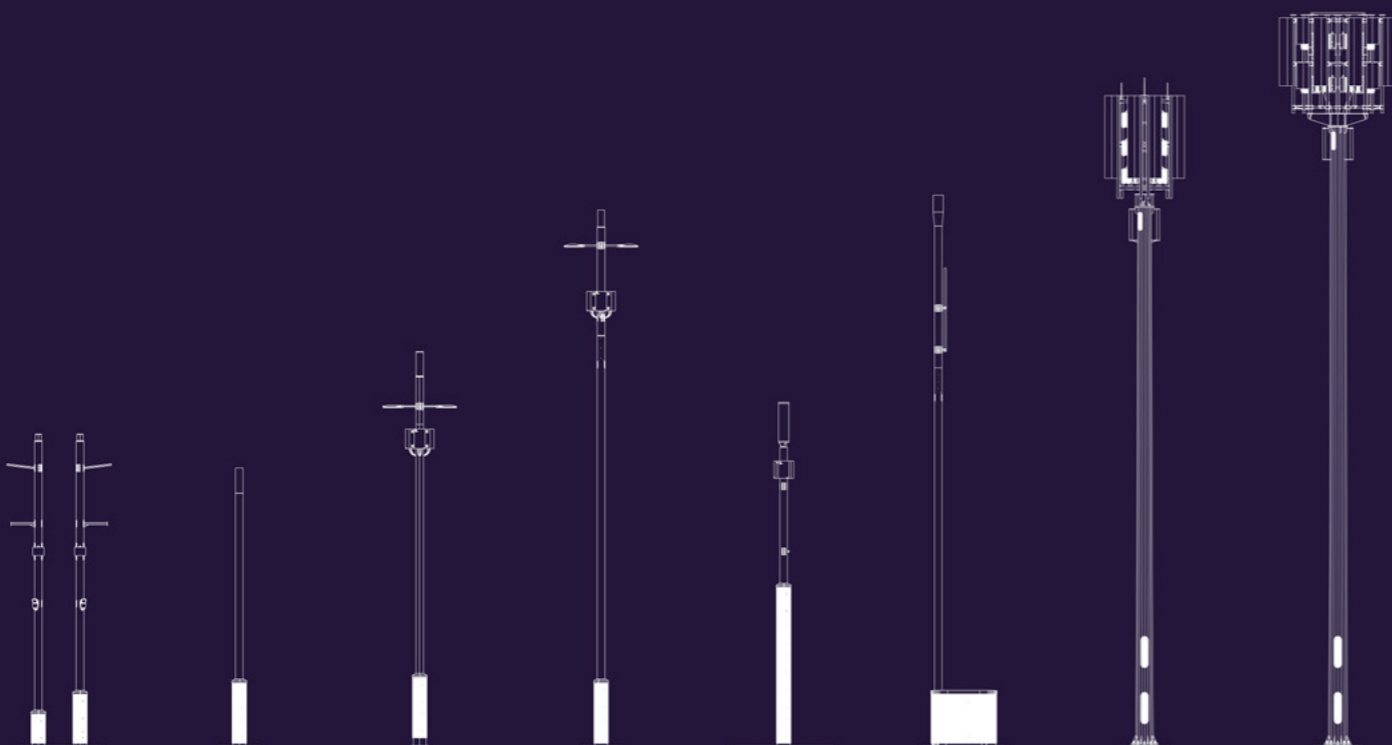
CU Phosco Monopoles are part of a larger range of CU Phosco Telecommunications Infrastructure Solutions designed to support Mobile Network Operators' connectivity in Urban, Semi-Urban and Rural Communities.

These include:

Connected Urban – the Smart Pole for Smart Cities, supporting 5G urban densification in one small footprint.

Monopoles – Structures and headframes that support rural environments with connectivity to support end-user communications demands.

Our team of dedicated telecommunications structural experts will tailor the right solution for your project.

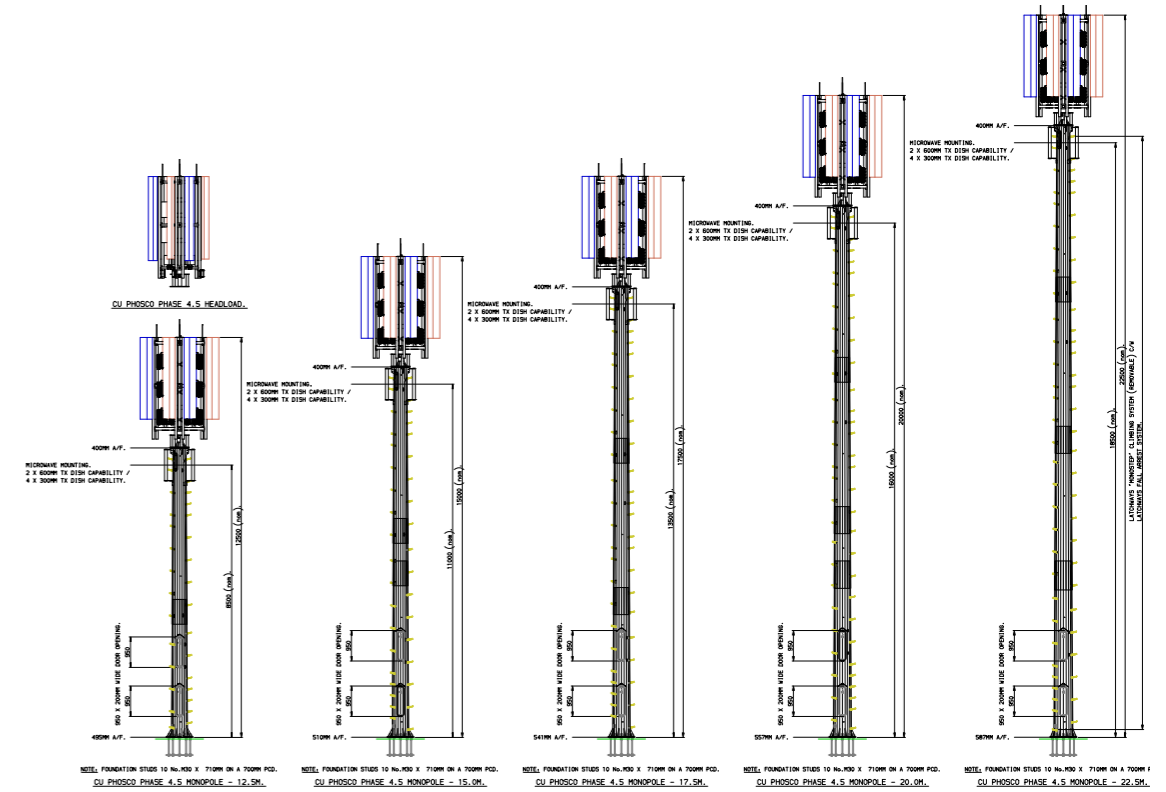


CU PHOSCO MONOPOLE RANGE

CU Phosco will work with you to develop, design and manufacture a Monopole specifically for your project.

Our Monopole range includes:

- Phase 4.5: Monopoles from 12.5m to 22.5m height
- Phase 6: Monopoles from 17.5m to 22.5m height
- Non-standard heights are also available to meet specific project requirements.



KEY FEATURES & BENEFITS

- **Multi-User Capability:** Our monopoles can support multiple users or sets of antennas, making them ideal for shared use between multiple operators, solving space and planning challenges.
- **Slim and Efficient Design:** The slimmest structural option for minimal visual impact.
- **Durability and Strength:** Constructed from 20-sided folded steel, offering superior stability and resilience.
- **Flexible Upgrades:** Our design team can recommend the most efficient upgrade methods for existing sites, utilising our extensive knowledge and flexible manufacturing capability.
- **Latchways “MonoStep” Climbing Peg System:** Optional safety features, including the “MonoStep” climbing peg system and fall arrest systems, providing maximum safety for site personnel during maintenance or installation.
- **BS EN ISO 1461 Hot-Dip Galvanised Steel Construction:** All monopoles are constructed to BS EN ISO 1461 standards for hot-dip galvanised steel, ensuring exceptional corrosion resistance. Painted finishes are available upon request.
- **Structural analysis/Global Design Checks (GDC’s)** all carried out in house by our own qualified engineers (at an additional cost).



About CU Phosco

CU Phosco provides an in-house end-to-end service encompassing design, manufacturing, installation and maintenance of high masts, columns, and lighting for the global market. Through design excellence, quality products, project management and a customer centric approach, our bespoke sustainable infrastructure solutions create safer, brighter, and connected environments.

Established in 1923, our century long legacy of technical expertise and operational integrity has earned the trust and business of customers worldwide across sectors including road, telecoms, airports, ports, and sports.

Our lighting products are rigorously tested to be used in all environments and are built with circularity in mind. Our lighting columns and masts range from 3 metres to 60 metres in height and can be seen on roads, motorways, at airports and ports, shopping centres, residential areas, and sports stadiums throughout the world.

Our products are designed and manufactured in the UK at our dedicated high-mast facility, and made from 100% recyclable or reusable materials.

