



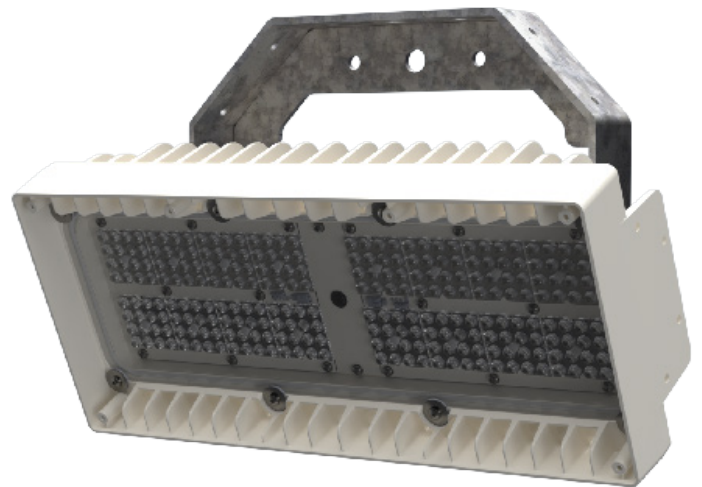
FL820 Stadia

TECHNICAL DATASHEET

FL820 is a high output LED floodlight, which is designed for all types of stadia lighting, and may be used as a replacement for existing 1kW or 2kW floodlight systems. It is available as a single, twin or triple module with CSP (Chip Scale Package) LEDs.

This luminaire complies with ETL guidelines for White Light Emitting Diode Lighting Units and is eligible for the Enhanced Capital Allowance (ECA) scheme.

SPECIFICATION



Light Source	Samsung CSP LEDs		
Number of LEDs	256 (per module)		
Colour Rendering Index	>70		
Optical Cover	Flat glass		
Max. Luminaire Efficacy at full Power	154lm/W		
Max. Luminaire Efficacy	173lm/W		
Electrical Class	I		
Lumen Maintenance Output (Ta = 25°C)	L90 @ 100,000 hours, Ta = 45°C, L92 @ 100,000 hours, Ta = 25°C		
Driver Current	700, 850, 1050, 1200, 1400mA		
Operating Temperature	-40°C to +50°C		
Storage Temperature	-40°C to +80°C		
Installation Height	10 ~ 50m		
Installation	Stirrup mount		
Material	Marine Grade Aluminium LM6 (module), Aluminium side plates, Galvanised steel stirrup		
Finish	Polyester powder coated RAL 9010		
Ingress Protection	IP66		
Luminaire Tilt (On Site)	-15°C to +15°C		
Product Configuration	FL820-1	FL820-2	FL820-3
Max. Luminaire Luminous Flux	79300lm	158600lm	237900lm
Power Consumption	255-512W	510-1024W	765-1536W
Wind Area Side (FPA)**	0.042m ²	0.087m ²	0.116m ²
Wind Area Front (FPA)***	0.153m ²	0.323m ²	0.422m ²
Weight (Kg)	11.6kg	21.9kg	29.6kg

FL820 Stadia

TECHNICAL DATASHEET

